

(preliminary)
Wholesale Catalog

2025 CALENDARS

Tidemark

TABLE OF CONTENTS

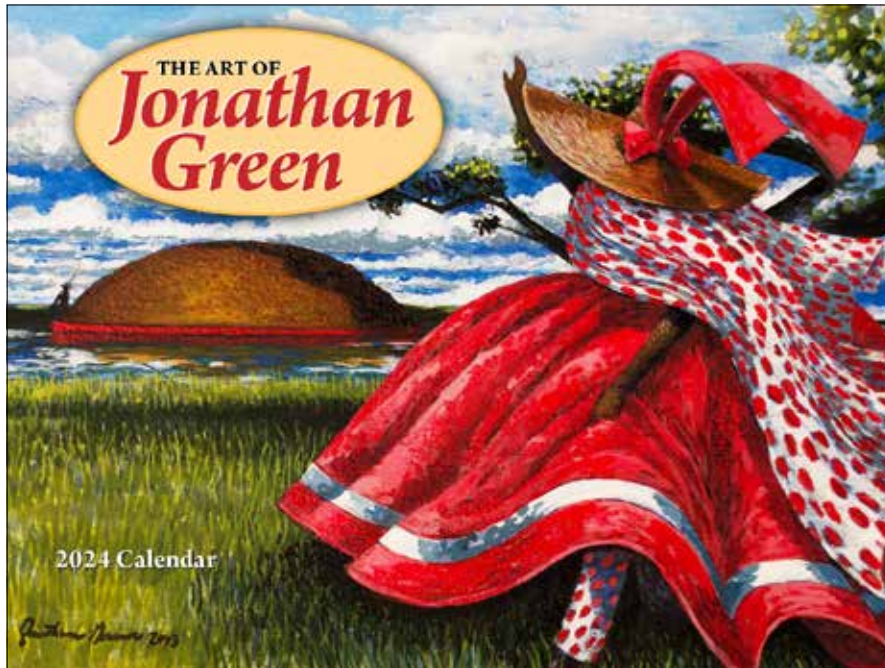
Art of Jonathan Green..... 2	Native American 6	Trains..... 19
Boats..... 3	Nature 7	Order Form..... 13
Civil War..... 5	On the Road 11	
Golf..... 6	Planes..... 19	

CALENDARS

Ancient Civilizations..... 6	Colorado Narrow Gauge..... 20	Pennsylvania Railroad 23
Art of Jonathan Green..... 2	Ford Classics..... 17	Railroading! 24
Art of the Boat — Mystic/Rosenfeld 3	Ghost Dance 7	Rock Island..... 24
Baltimore and Ohio..... 19	Great Golf 6	Sailing to the Mark 5
California Vintage..... 11	Great Old Trucks 17	San Francisco Cable Cars..... 25
Cars of the Fab 50s..... 12	Great Trains 20	Santa Fe Railway 25
Celebrating Roses..... 7	Gulf Mobile Ohio Railroad 21	Seashells..... 10
Chevy Classics 12	Hot Rods 18	Sierra Nevada 9
Civil War..... 5	Howard Fogg’s Trains..... 21	Southern Pacific..... 26
Classic Camaros..... 15	Illinois Central..... 22	Street Cars and Trolleys 26
Classic Corvettes 16	Milwaukee Road..... 22	Those Remarkable Trains..... 27
Classic Motorboats 3	Mount Rainier 8	Union Pacific 27
Classic Motorcycles 15	Muscle Car Classics..... 18	Volcano 10
Classic Mustangs 16	Navy..... 4	Warbirds 19
Classic Outhouses 8	New England Seasons..... 9	Yosemite 11
Classic Sail..... 4	New York Central Railroad 23	

For questions about titles or terms, contact your local sales representative or:
Tide-mark 860-310-3370

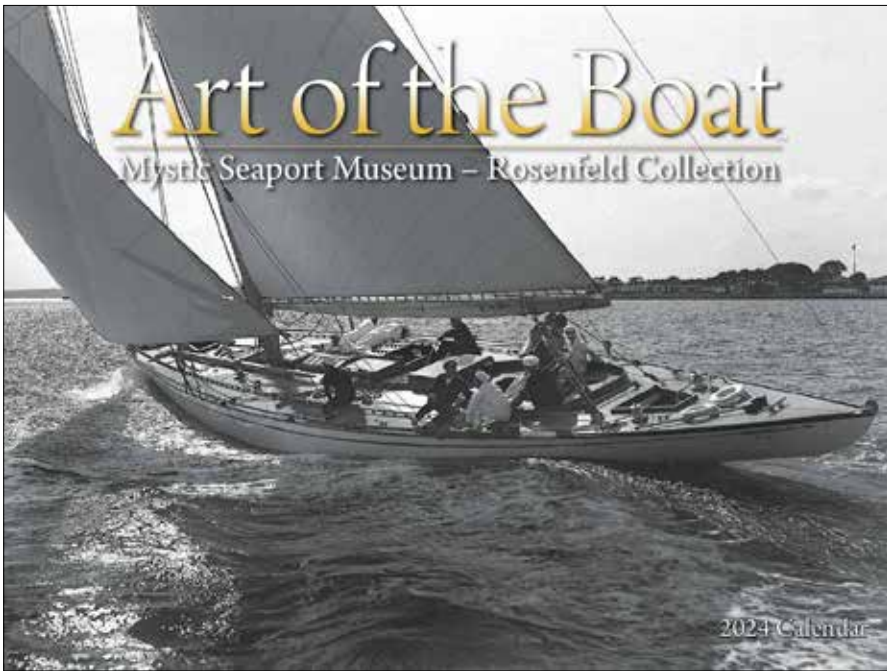
THE ART OF JONATHAN GREEN



The Art of Jonathan Green calendar showcases the southern culture of his Gullah heritage from the inland marshes near the Sea Islands of South Carolina. Jonathan Green, a graduate of the prestigious School of the Art Institute of Chicago, has won national awards and is recognized by curators and museums as one of the South’s most important living artists and among the greatest African-American artists. His work is found in museums in Germany, Sierra Leone, and throughout the United States.

5407, US \$17.95, 13.75 x 20.6 inches, open



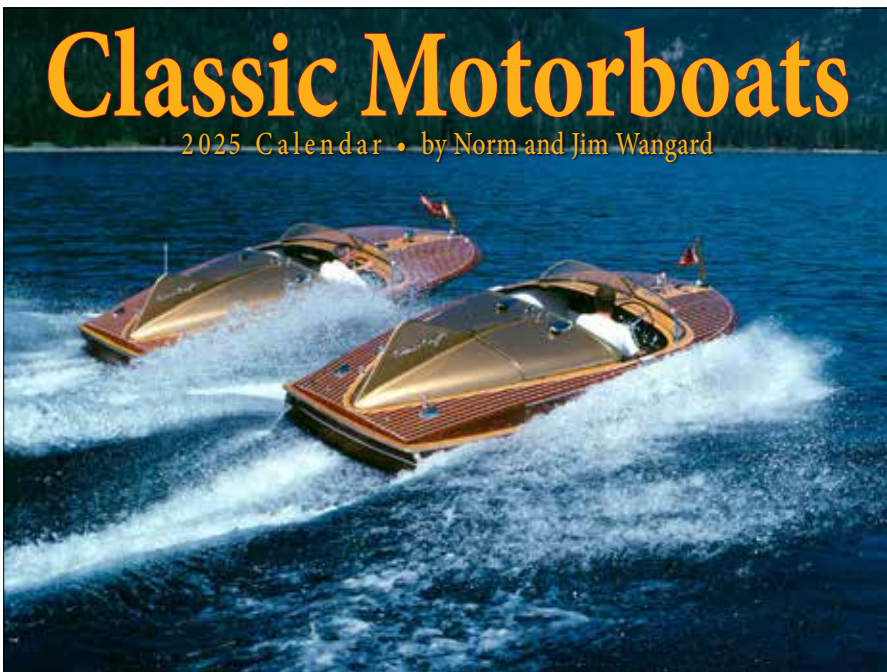


In 1898 using a borrowed camera Morris Rosenfeld won a photo contest with the picture of a three-masted ship on the East River of New York. The \$5 prize allowed him to purchase his own camera and begin a career in photography. Together Morris and son Stanley devoted nearly a century to making photographs of boats. Their work — more than one million images — was acquired in 1984 by Mystic Seaport Museum and is the largest collection of maritime photographs in the United States.

5414, US \$17.95, 13.75 x 20.6 inches, open



BOATS



Elegant and fast, here are glorious examples of the golden age of motorboating. Sculpted in mahogany, brilliantly varnished, fixtured in chrome, and powered by reciprocating engines of vast displacement, these personal powerboats provided then, as they do today, a sense of exhilaration for their owners. The photographs and text of *Classic Motorboats* come from Norm and Jim Wangard, the publishers of *Classic Boating* magazine.

5483, US \$17.95, 13.75 x 20.6 inches, open



BOATS

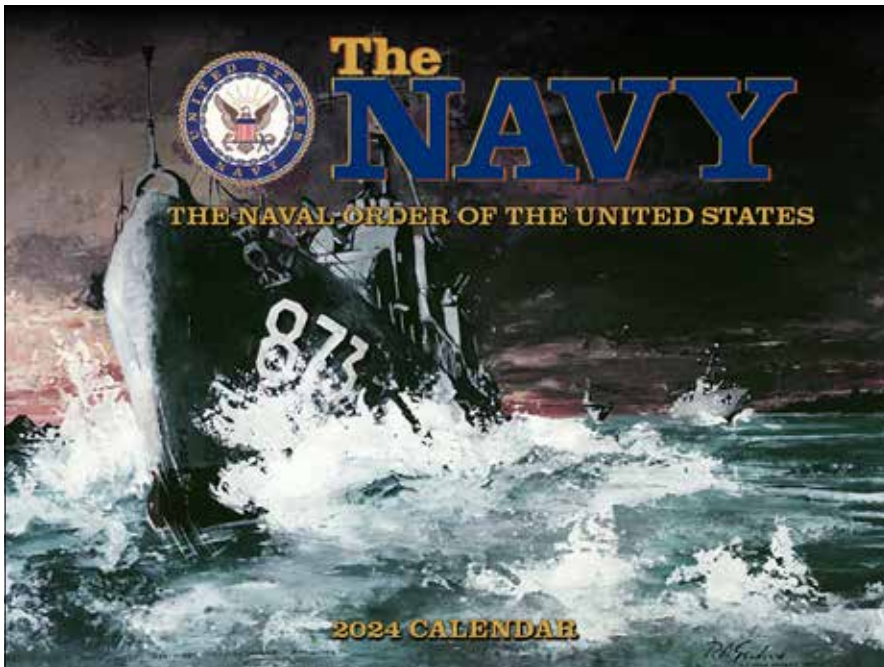


Classic Sail

By Kathy Mansfield — 2025 Calendar

Classic Sail features sailing craft ranging from traditional working vessels and cruising sailboats, to exciting America's Cup contenders of the past. Kathy Mansfield, whose work is found in nautical magazines, including *WoodenBoat*, *Classic Boat*, and *Water Craft*, brings together American and European boats in this very enjoyable pan-Atlantic collection.

5056, US \$17.95, 13.75 x 20.6 inches, open



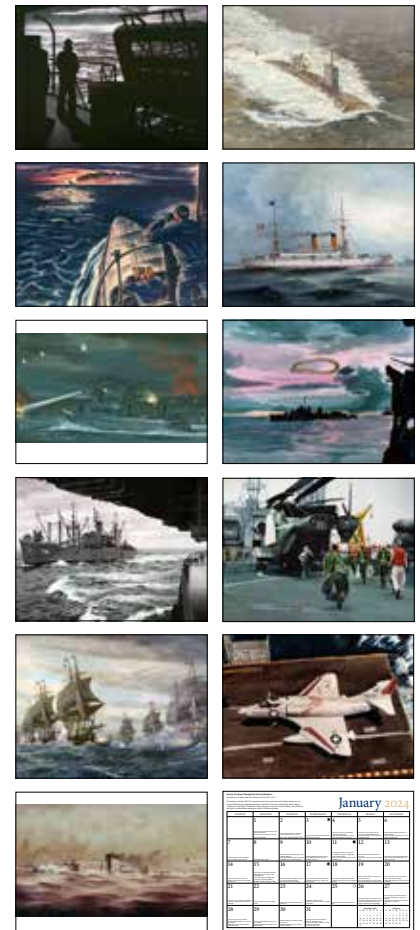
The NAVY

THE NAVAL ORDER OF THE UNITED STATES

2024 CALENDAR

The Navy calendar is a tribute to the men and women who have fought to protect our nation, to deter aggression, and to maintain freedom of the seas. Navy and Marine Corps action over the past 249 years is represented here in full-color paintings. Significant events in naval history are listed in every month. Sales of the calendar benefit the Naval Order Foundation of the United States. Anchor's aweigh!

5490, US \$15.95, 13.75 x 20.6 inches, open



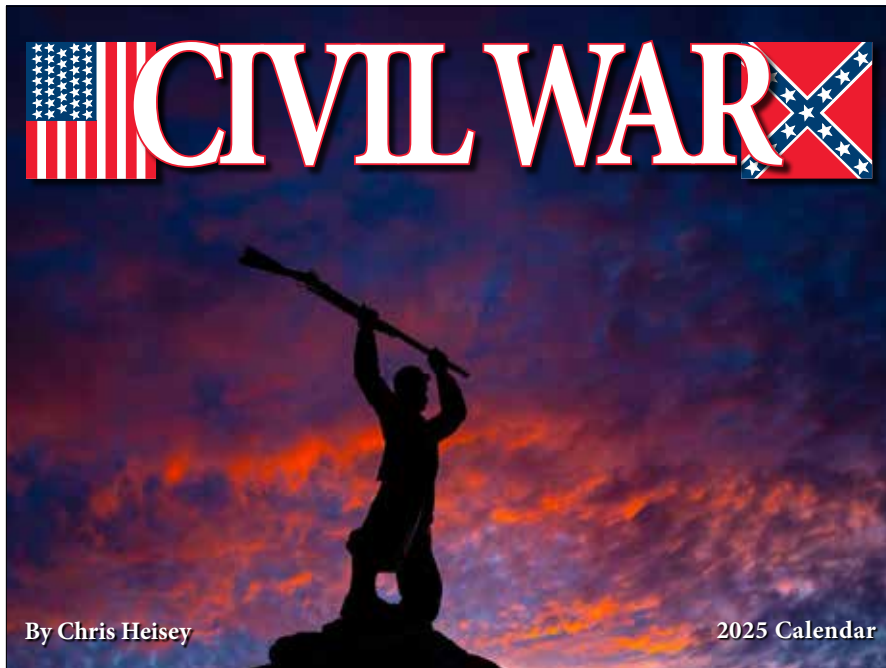


How to sail faster than your competitors? How to round the mark first and find a breeze to keep you ahead? On salt water and fresh all around America, sailors are planning strategies to overcome the limits of their waterlines and finesse the right of way to tack ahead of the competition. Andrew Sims and JH Peterson capture the excitement of competitive sailing around the world and bring great races together in **Sailing to the Mark**.

5452, US \$17.95, 13.75 x 20.6 inches, open

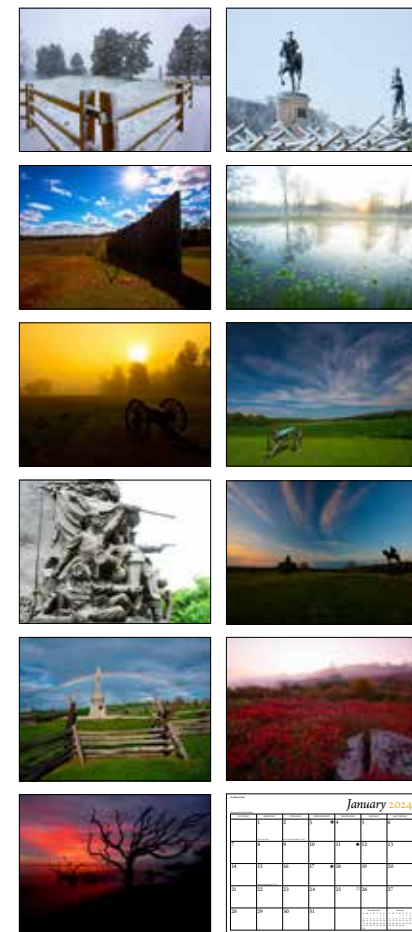


BOATS

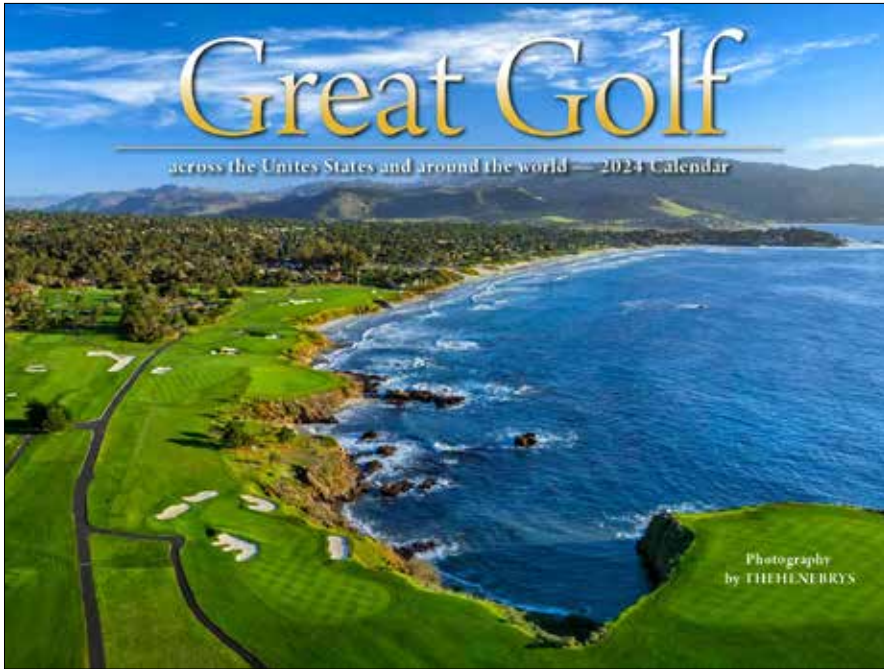


Civil War chronicles twelve of the war's crucial actions through contemporary battlefield photographs, war-era engravings and photographs, along with extensive historical commentary. The calendar is photographed and written by Chris Heisey, the nation's foremost Civil War battlefield photographer. Days of the week list birthdays of key officers and politicians of both the Blue and the Gray.

5254, US \$17.95, 13.75 x 20.6 inches, open

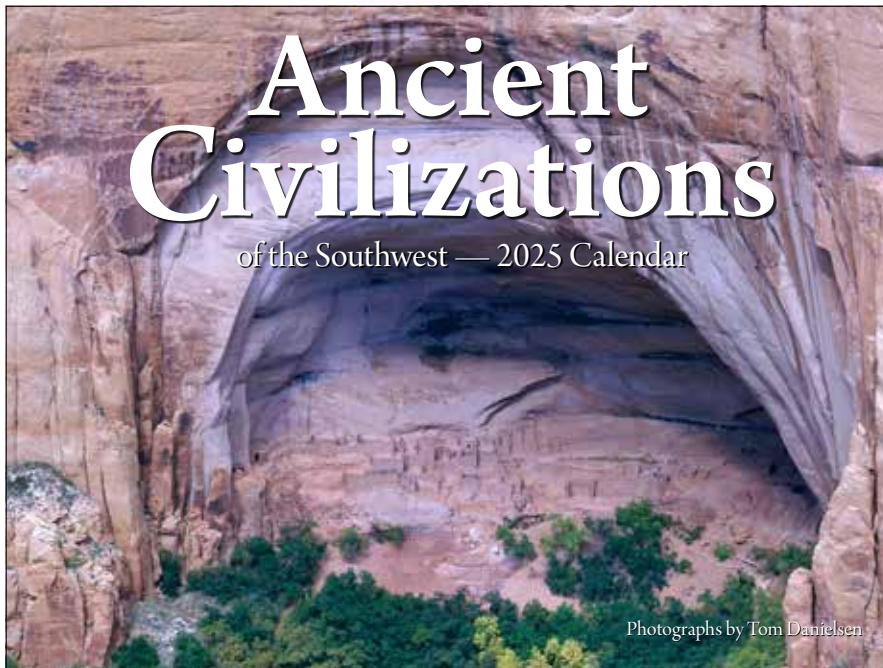
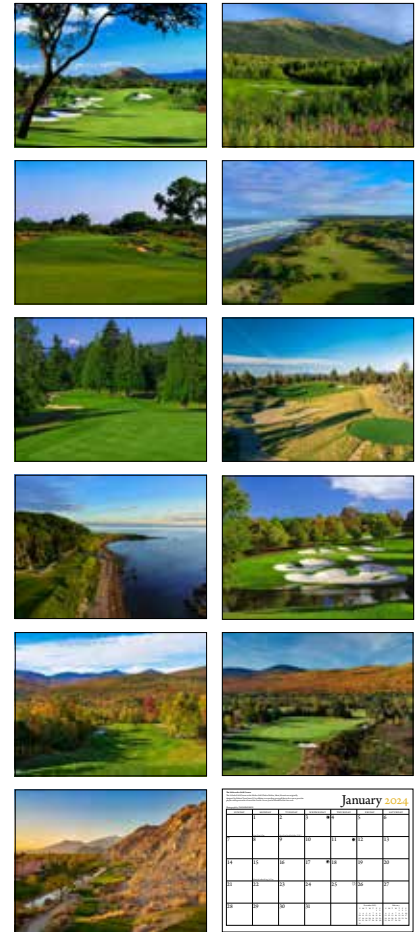


CIVIL WAR



Enjoy **Great Golf** across America and beyond in this expansive collection of links that ranges from Wailea in Hawaii to Kingsbarns in Scotland. There are great public courses like Pebble Beach and private courses like the Palmer Course at PGA West. These tracks will challenge you to bring your best game and tee off. Fore!

5438, US \$17.95, 13.75 x 20.6 inches, open



The lives of ancient Puebloans who lived in the American southwest are largely mysterious to us. Their legacy is a series of architectural sites that reveal their ingenious building skills, elements of their religious practice, and the art they carved into stone. **Ancient Civilizations** explores that cultural heritage and celebrates its legacy and preservation.

5353, US \$17.95, 13.75 x 20.6 inches, open





In the late 1800s, the Ghost Dance religion promised hope and resurrection at a time when Native American nations across America faced destruction. Misunderstood by authorities, the Ghost Dance sparked the savage attack on Sioux men, women, and children at Wounded Knee in 1890. Through his paintings in **Ghost Dance**, JD Challenger renews the bonds of strength and dignity linking Native Americans to their history.

5247, US \$17.95, 10.3 × 27.5 inches, open

NATIVE AMERICAN



Celebrating Roses gives us America's official flower in all its beauty and variety. The rose's rich colors and elegant petal structure come alive in photographs by Rich Baer, an award-winning member of the Portland Rose Society. Sales of the calendar support the educational missions of the PRS.

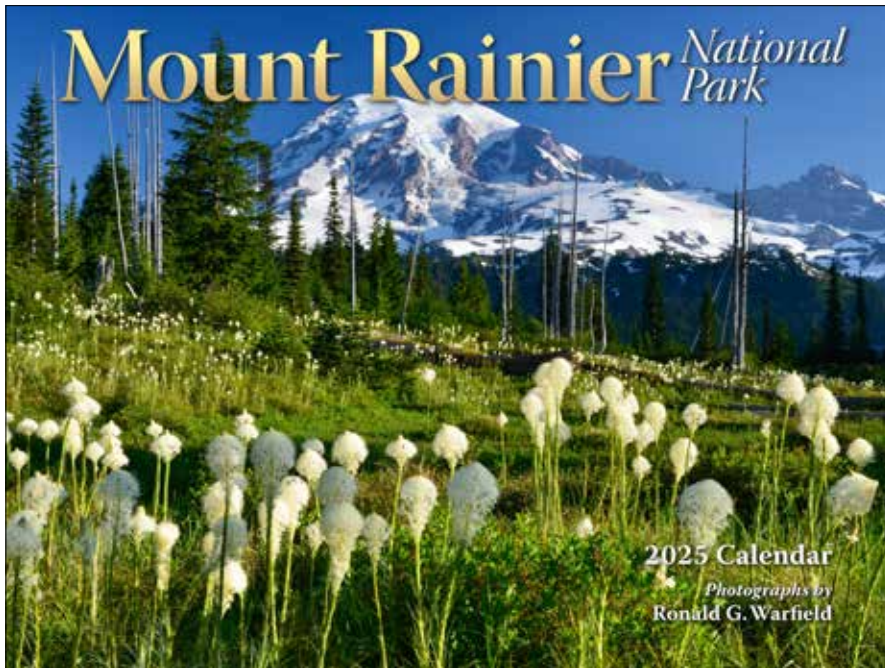
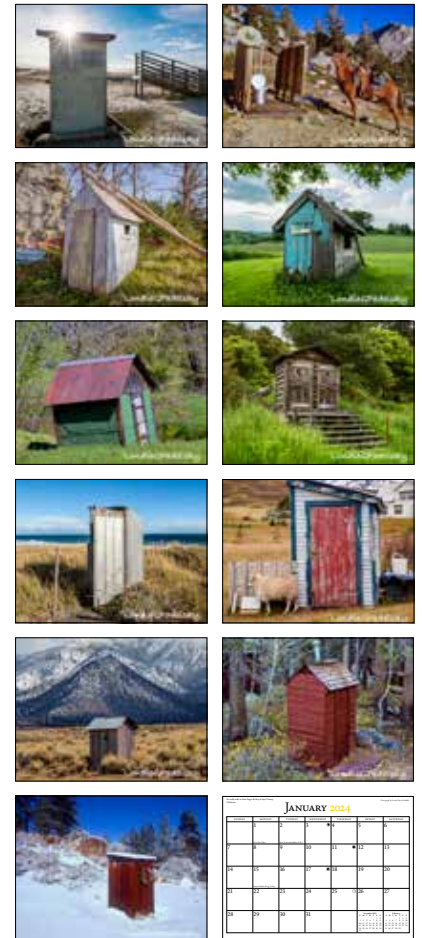
5049, US \$17.95, 13.75 × 20.6 inches, open

NATURE



We grapple with vital human needs every day. They inspire great paintings, extraordinary books, symphonies, and cathedrals. **Classic Outhouses** pictures privies that cross every culture and at special moments are as important as any book or cathedral... though a few pages of that book could also prove useful.

5346
 US \$17.95
 13.75 x 20.6 inches, open



Mount Rainier National Park in western Washington State preserves some of the best of nature's scenic treasures. Described as an Arctic island in a temperate sea of coniferous forest, Mount Rainier is the tallest volcano in the Cascade Range and the largest single-peak glacial system in the contiguous United States. The **Mount Rainier National Park** calendar captures the park in all of its seasonal beauty through words and photographs by Ronald G. Warfield.

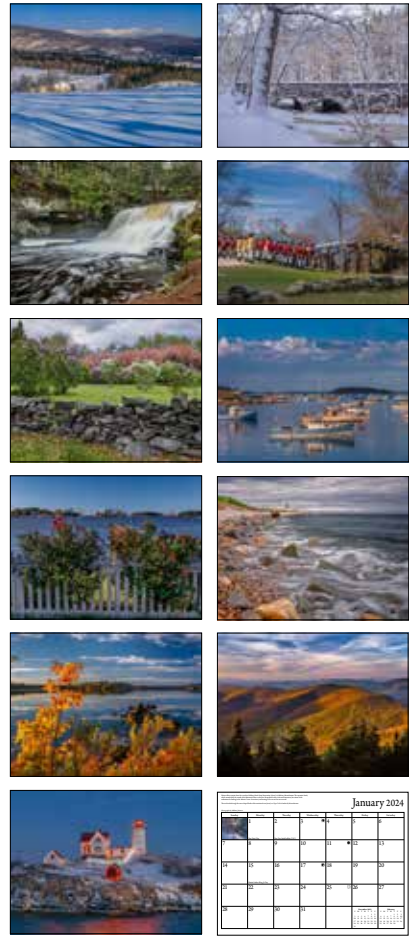
5117, US \$17.95, 13.75 x 20.6 inches, open



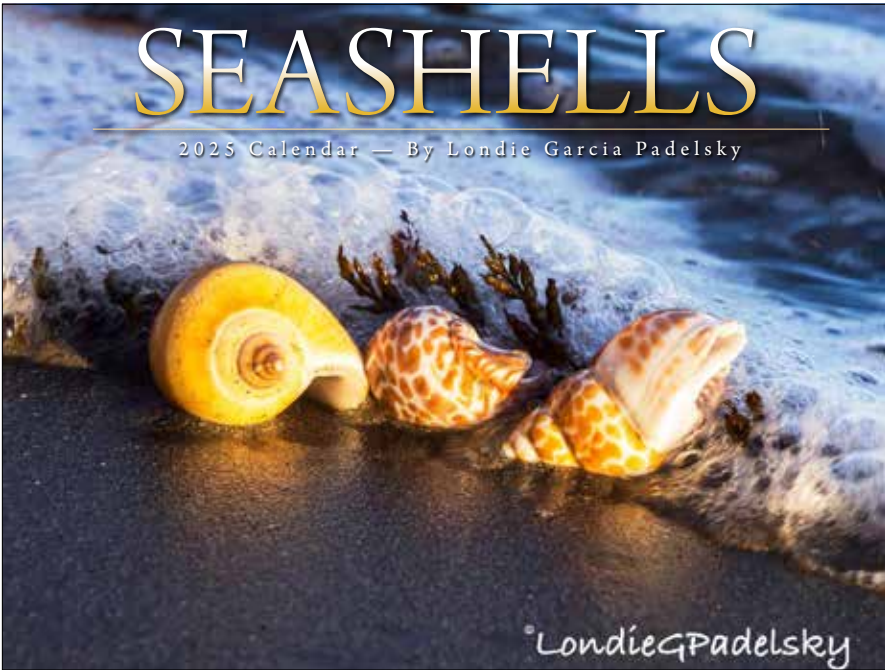


New England Seasons invites you to share a year in our classic corner of America: a blanket of snow transforms the character of Salisbury Beach in Massachusetts, Atlantic waves crash against the rocky Narragansett coast in Rhode Island, brilliant autumn color blankets the shoulders of Table Mountain in New Hampshire, and a “tree” of Maine lobster pot buoys lights the way to a New Year! Be part of every season in 24 full-color images.

5124, US \$17.95, 13.75 × 20.6 inches, open

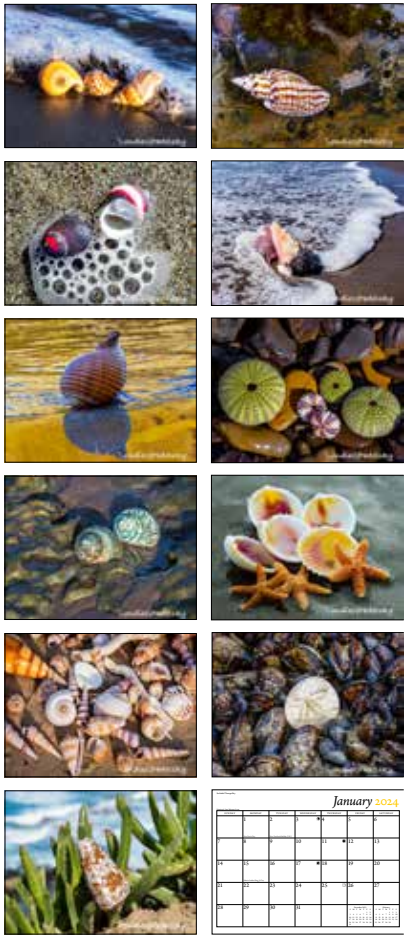


NATURE



We have seashells by the seashore and to see them is to understand why Sally might be successful selling them. The old children’s rhyme may be a tongue-twister, but the shells are colorful and appealing. Seashells is like seeing the Amalfi coast in miniature, with bright, distinctive dwellings glowing in the sunshine along a wave-washed shore.

5391, US \$17.95, 13.75 × 20.6 inches, open

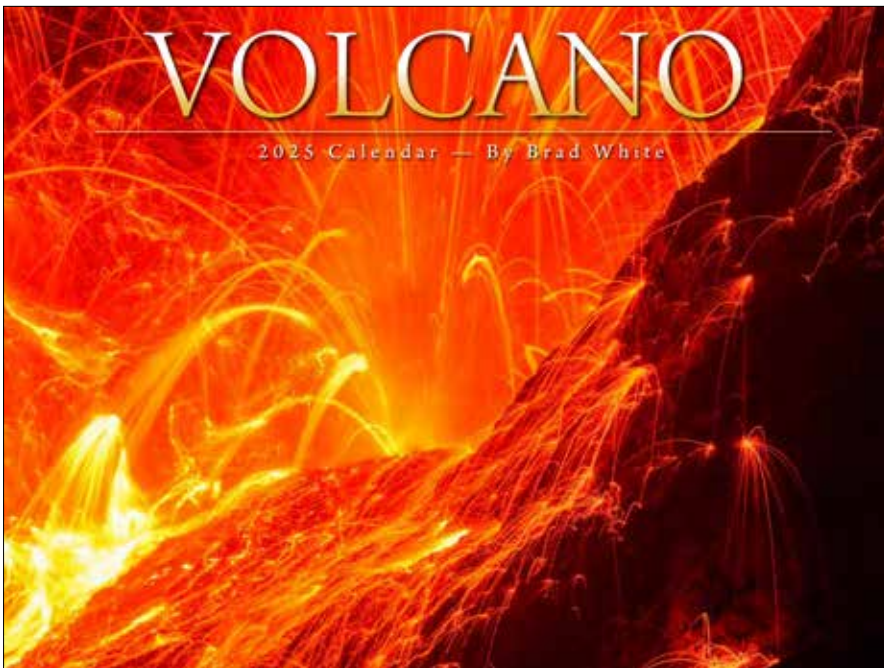


NATURE



Naturalist John Muir described the excitement of being in the Sierra Nevada by saying, "We are now in the mountains and they are in us, kindling enthusiasm, making every nerve quiver, filling every pore and cell of us." Muir called the mountains "the grandest of all special temples of Nature." **The Sierra Nevada** calendar reveals the remarkable landscape that continues to inspire us today.

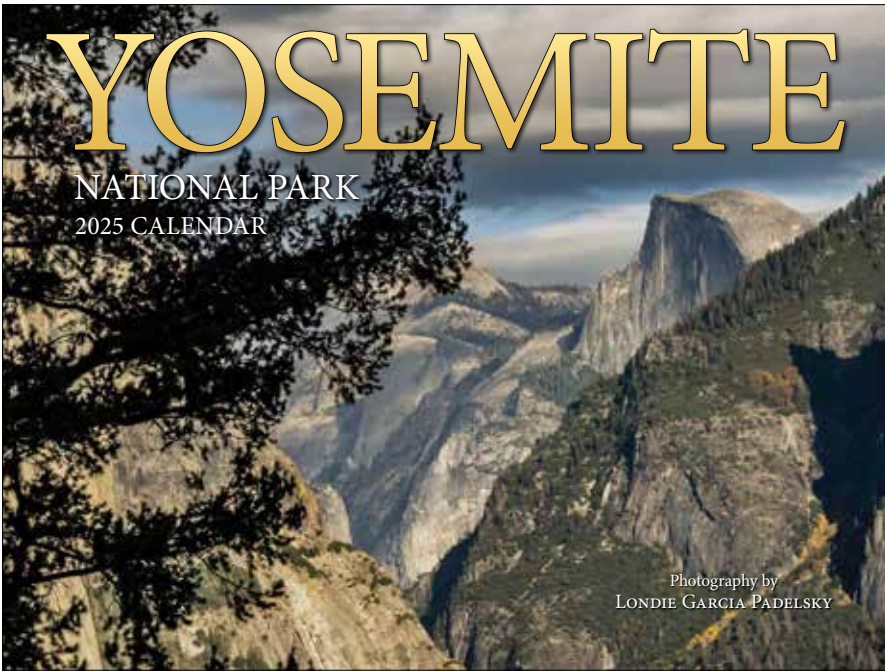
5308, US \$17.95, 13.75 x 20.6 inches, open



Bradley White travels around the world taking the hottest pictures anywhere. His remarkable photographs from inside volcanos take you as close to the fiery magma as it is possible to be without being broiled alive. No fire-proof suit needed, just join the adventure.

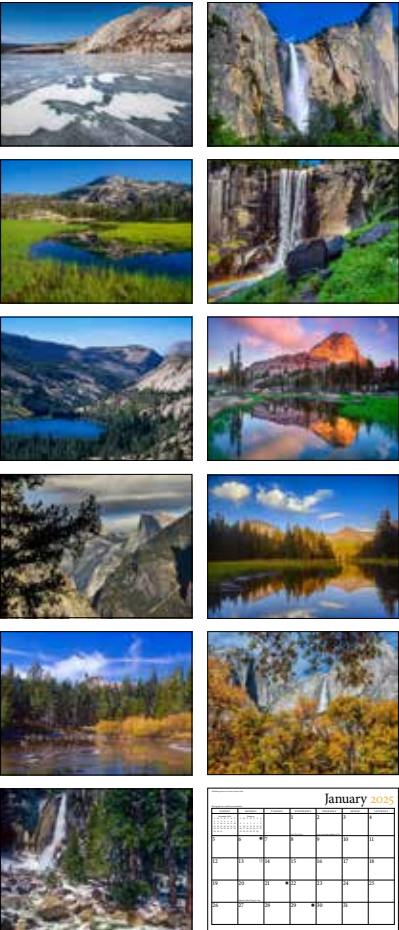
5339, US \$17.95, 13.75 x 20.6 inches, open



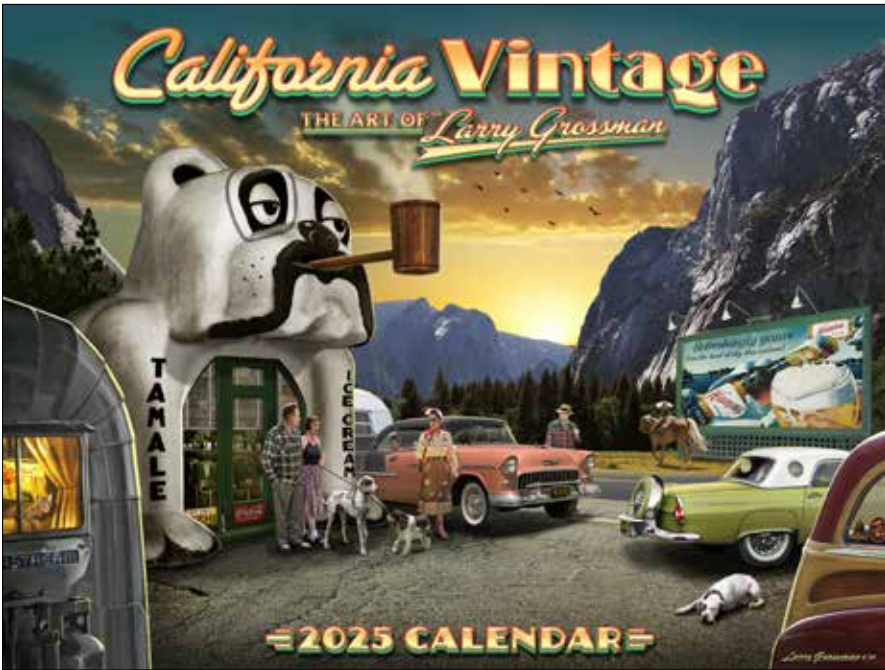


John Muir lived in the Yosemite Valley from 1868 to 1873. The attention he won for Yosemite ensured its place as a National Park. Muir wrote, "Nowhere will you see the majestic operations of nature more clearly revealed beside the frailest, most gentle and peaceful things." The **Yosemite** calendar shares the spirit of awe Muir felt so clearly almost 150 years ago.

5476
 US \$17.95
 13.75 x 20.6 inches, open



NATURE



Larry Grossman has created a panoply of icons from the 1930s that are quintessential California. There is the Zep Diner in L.A., the Brown Derby on Wilshire Blvd., the Pan Pacific Auditorium, the Bruin Theater, and a few imagined locations perfect for the era, had only someone thought of them. The big cars, fast airplanes and great shakes are happening here..

5377, US \$17.95, 13.75 x 20.6 inches, open

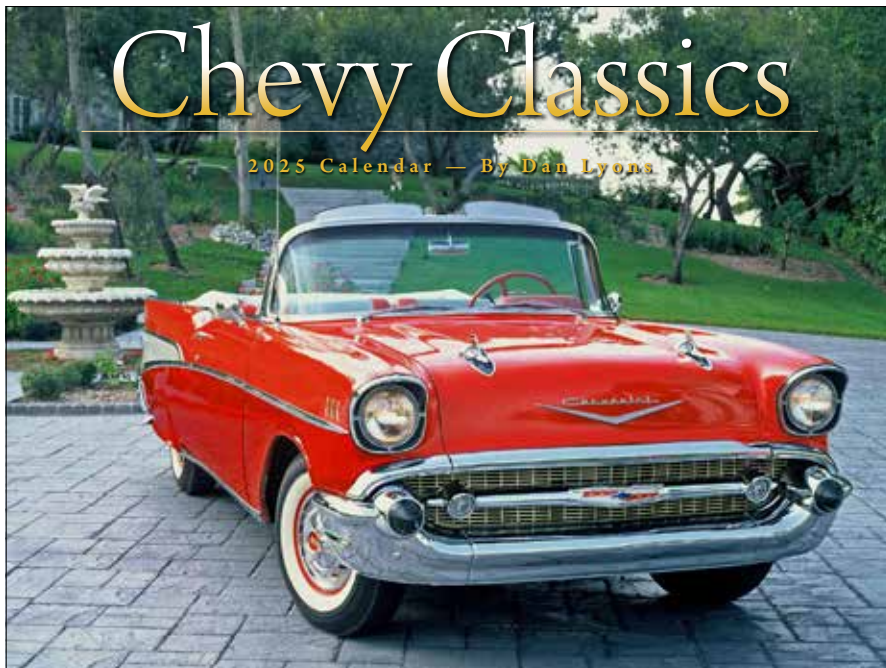
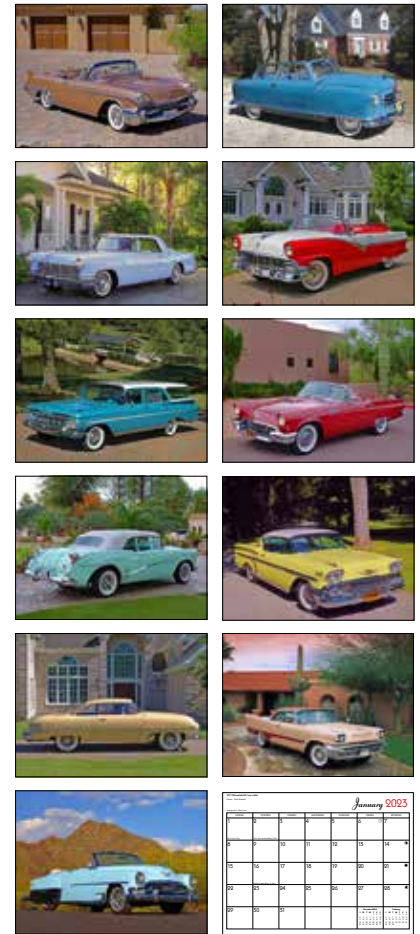


ON THE ROAD



With brilliant whitewalls, glittering chrome, and massive wheelbases, **Cars of the Fab 50's** shows off American autos from Cadillac, Nash, Chrysler, Ford, and more. Detroit's golden age put America on the highway and gave the world auto envy.

5209, US \$17.95, 13.75 x 20.6 inches, open



Nowhere in the world is the link between cars and their culture stronger than it is in America. **Chevy Classics** celebrates the close bond between American drivers and their automobiles. Memorable models like Impala, Bel Air and Corvette are why so many people chose to see the USA in their Chevrolets.

5261, US \$17.95, 13.75 x 20.6 inches, open



Tidemark

207 Oakwood Avenue • West Hartford, CT • 06119

Phone 860-310-3370 x108 | e-mail Scott@tide-mark.com

Date _____ Customer ID# _____

Ship date: June _____ July _____ August _____

P.O.# _____ Buyer _____

September _____ October _____ November _____

Bill to: Please check here if new address

Ship to:

Phone: _____

Sales Rep: _____

E-mail address: _____

Returnable Nonreturnable

Item	Qty	Title	Price	Total

Free Freight Available See Below

TERMS AND CONDITIONS

CALENDAR DISCOUNT SCHEDULE

Minimum Quantity	Returnable	Nonreturnable
12	50%	60%

Payment on all invoices is due Net 60 days. Past due accounts will be charged 1.5% interest per month and, if necessary, collection fees. Open accounts are subject to credit approval.

MINIMUM CALENDAR ORDER:

12 copies, mixed titles, no minimum per title.

FREIGHT: FOB West Hartford, CT

- Free freight on orders of 24 or more copies to one location.

PUZZLE DISCOUNT SCHEDULE

TERMS: Wholesale orders: 50% discount on 6+ units; free-freight on 48+ units

ADJUSTMENTS: Notify Tide-mark of any shipping errors, damaged or defective pieces within 30 days of shipment. We cannot honor any claims thereafter.

RETURNABLE TERMS: Returnable orders must be paid within regular terms. Calendar returns are accepted for credit only and returns must be made between January 15 and March 15 of the year shown on the calendar.

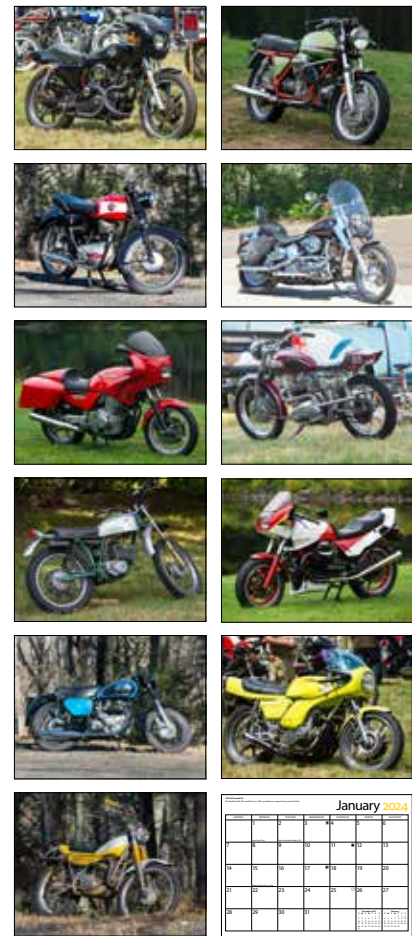
Call Tide-mark for returns instructions and mailing address. Returns submitted without invoice information will be credited at 60%. Return credit will be applied to future purchases.

CREDIT CARD PAYMENT: We accept payment by Mastercard, Visa, Discover and, AMEX. As a condition of this purchase, the buyer agrees to be bound by the terms and conditions set forth herein.

Publisher's ISBNs 978-1-63114- 2025 CALENDARS

Item	Qty.	Calendar Title	Retail	Item	Qty.	Calendar Title	Retail
5353		Ancient Civilizations	\$17.95	5087		Howard Fogg's Trains	\$17.95
5407		Art of Jonathan Green	\$17.95	5094		Illinois Central Railroad	\$17.95
5414		Art of the Boat - Mystic/Rosenfeld	\$17.95	5100		Milwaukee Road	\$17.95
5032		Baltimore and Ohio	\$17.95	5117		Mount Rainier	\$17.95
5377		California Vintage	\$17.95	5216		Muscle Car Classics	\$17.95
5209		Cars of the Fab 50s	\$17.95	5490		Navy	\$17.95
5049		Celebrating Roses	\$17.95	5124		New England Seasons	\$17.95
5261		Chevy Classics	\$17.95	5186		New York Central Railroad	\$17.95
5254		Civil War	\$17.95	5230		Pennsylvania Railroad	\$17.95
5278		Classic Camaros	\$17.95	5445		Railroading!	\$17.95
5285		Classic Corvettes	\$17.95	5131		Rock Island	\$17.95
5483		Classic Motorboats	\$17.95	5452		Sailing to the Mark	\$17.95
5421		Classic Motorcycles	\$17.95	5322		San Francisco Cable Cars	\$17.95
5315		Classic Mustangs	\$15.99	5148		Santa Fe Railway	\$17.95
5346		Classic Outhouses	\$15.95	5391		Seashells	\$17.95
5056		Classic Sail	\$17.95	5308		Sierra Nevada	\$17.95
5063		Colorado Narrow Gauge	\$17.95	5193		Southern Pacific	\$17.95
5292		Ford Classics	\$17.95	5155		Street Cars	\$17.95
5247		Ghost Dance	\$17.95	5162		Those Remarkable Trains	\$17.95
5438		Great Golf	\$17.95	5179		Union Pacific	\$17.95
5223		Great Old Trucks	\$17.95	5339		Volcano	\$17.95
5384		Great Trains	\$17.95	5469		Warbirds	\$17.95
5070		Gulf Mobile Ohio	\$17.95	5476		Yosemite	\$17.95
5360		Hot Rods	\$17.95				

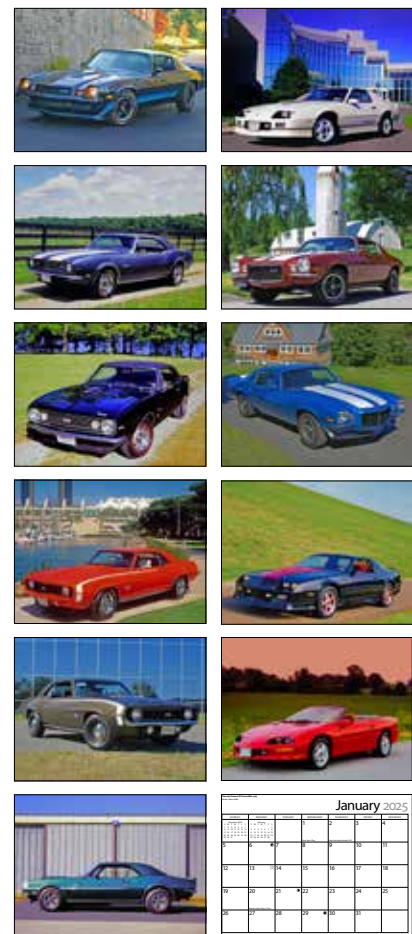
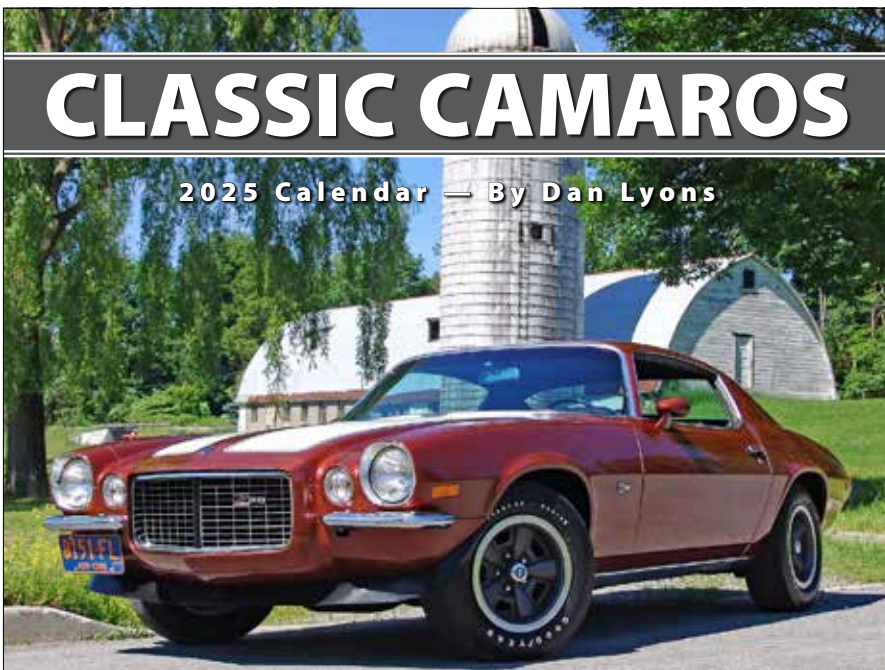
DISCOUNT		TOTAL UNITS		TOTAL SALE	
-----------------	--	--------------------	--	-------------------	--



Speed and handling—combined with sleek design—have been the dream of avid motorcyclists since the first bike took to the road some 125 years ago. Photographer Steve Cote takes enthusiasts on a road trip through a year of classic bikes. **Classic Motorcycles** brings you the groundbreaking models that would be the highlights of any collection.

5421
 US \$17.95
 13.75 × 20.6 inches, open

ON THE ROAD



In 1966, General Motors was feeling pony car envy. The automaker needed a car that would leave Ford's Mustang in the dust. Chevrolet answered the call with the 1967 Camaro. Still kicking up dust after six generations, **Classic Camaros** features models from the 1967 SS Coupe, and the 1970 RS Z28, to the 1988 IROC-Z, the 1995 Z28 Convertible, and more. Dust up!

5278, US \$17.95, 13.75 × 20.6 inches, open

ON THE ROAD

CLASSIC CORVETTES

2025 CALENDAR — BY DAN LYONS



Designed as a concept car for Chevrolet in 1953, enthusiastic response persuaded General Motors to produce 300 hand-built Corvette rag tops for that model year. Eight generations later, the Corvette has become an iconic sports car and the model likely to flaunt GM's newest technological advances.

5285
 US \$17.95
 13.75 x 20.6 inches, open



CLASSIC MUSTANGS

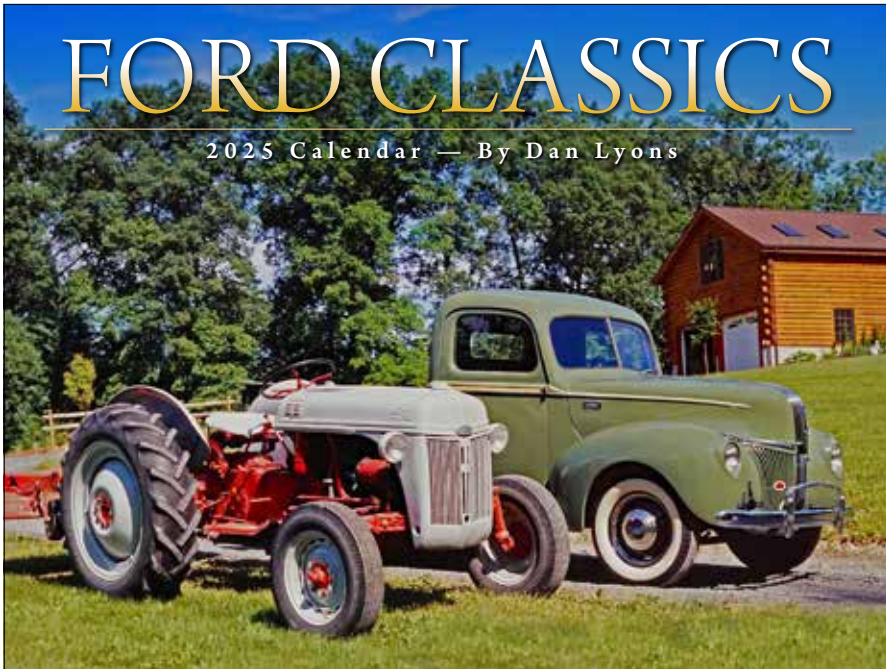
2025 CALENDAR
 BY DAN LYONS



In 1962 Ford Motor Company introduced a concept car dubbed the Mustang I. They tested the Mustang II in 1963. Production Mustangs began rolling off the line in 1964 as model year 1965 editions. Was the Mustang a success? Ford hoped to sell 100,000 the first year. After 18 months sales reached one million. America's "pony car" is still running strong after five decades.

5315, US \$17.95, 13.75 x 20.6 inches, open





FORD CLASSICS

2025 Calendar — By Dan Lyons

To offer a car that we could all afford, Mr. Ford revolutionized car building. The first Model T sold in July of 1903, the Model A followed in 1927, and innovations like the flathead V8 in 1932. F-Series trucks in 1948, and the Thunderbird in 1954 became modern classics and part of the reason to celebrate Ford favorites ranging from the 1929 Model A station wagon, and the 1955 Thunderbird, to the 1967 Bronco, the 1971 Ranchero Squire and more. Ford goes further!

5292, US \$17.95, 13.75 x 20.6 inches, open



ON THE ROAD



GREAT OLD TRUCKS

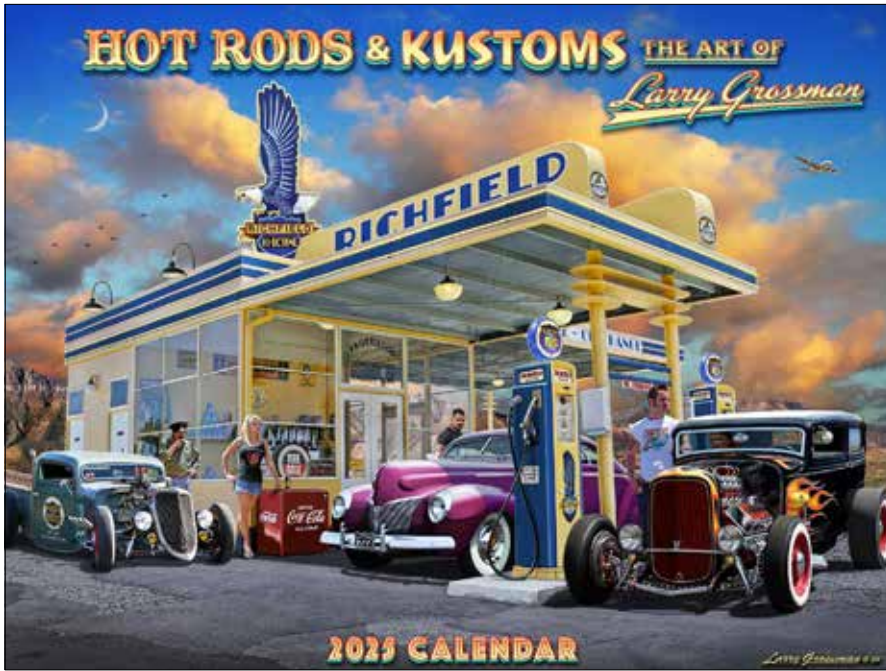
2025 Calendar — by Dan Lyons

Pickup trucks were once used for, well, picking up stuff. They were a little rough around the edges, maybe a sticky stick shift and heat that only worked sometimes. But you could fill up the bed with full sheets of plywood, or the remains of a kitchen remodeling job. **Great Old Trucks** made you feel like accomplishing something... that you had and that you could. These old trucks should inspire memories.

5223, US \$17.95, 13.75 x 20.6 inches, open

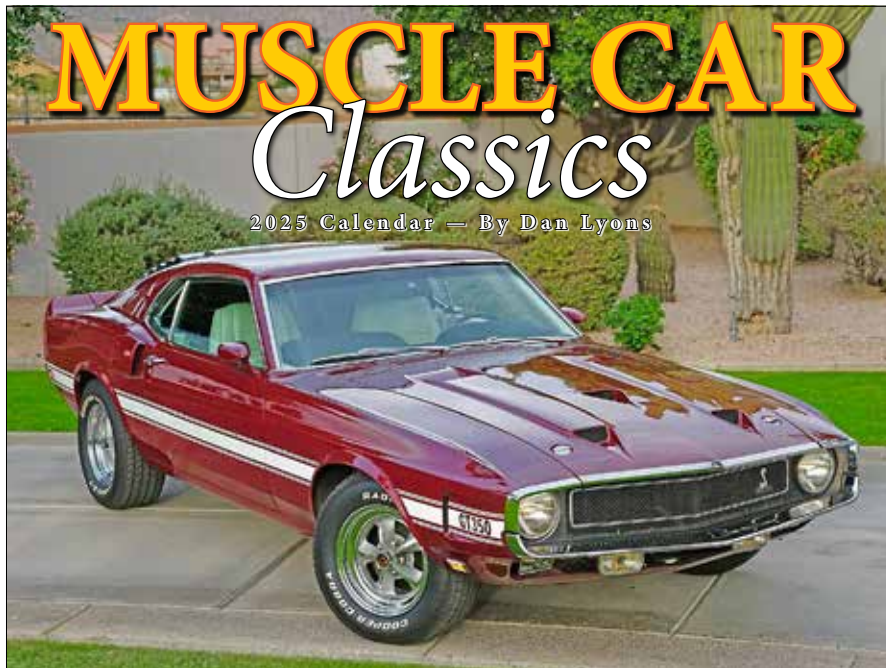


ON THE ROAD



Hot rods and custom cars have always represented the independent and rebellious spirit of America. A craze that started not long after WWII when G.I.'s returning home decided to strip down and modify for speed an old jalopy they could pick up for cheap. Whether cruising to the burger stand or racing at the drag strip, these lowered, chopped, flamed, and chromed cars got the looks ...and the girls! It's a trend that continues to this day and is more popular than ever. Hot Rod Artist Larry Grossman brings this exciting scene to life with his unique and highly detailed pictures in **Hot Rods**.

5360, US \$17.95, 13.75 x 20.6 inches, open



It's the second glance that hooks you. At first that Camaro, Charger or Mustang may look stock, but then the scoops, stripes and thrum of exhaust tell the real story about what's lurking beneath the hood. **Muscle Car Classics** was written and photographed by Dan Lyons, who has six books and more than 200 calendars to his credit.

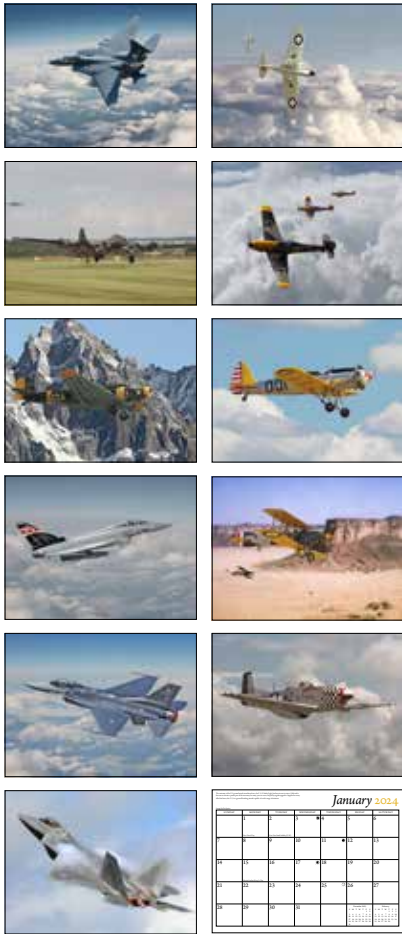
5216, US \$17.95, 13.75 x 20.6 inches, open





New battles require new tools, and **Warbirds** features a century of air power innovation. The WWI Bristol F.2b led to WWII Spitfires, the U.S. B-17, and the German Bf 109. More speed and power arrived with jet aircraft like the F-15 Strike Eagle, the F-22 Raptor, and the Eurofighter Typhoon. Don't miss the evolving action in the air!

5469, US \$17.95, 13.75 x 20.6 inches, open

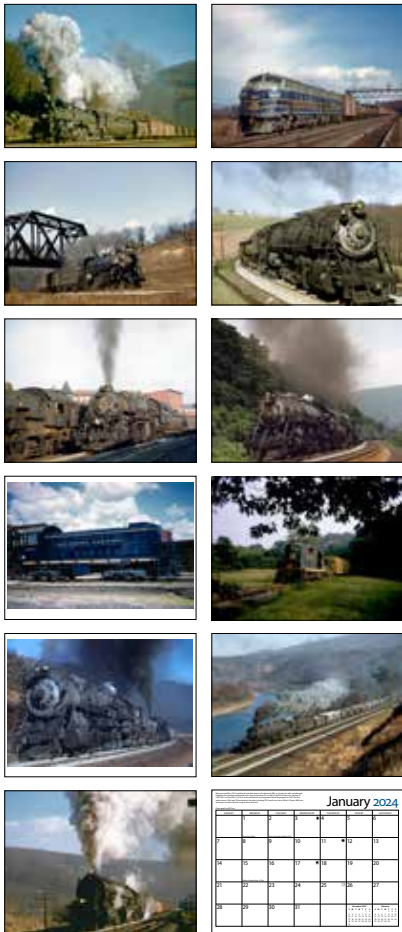


PLANES

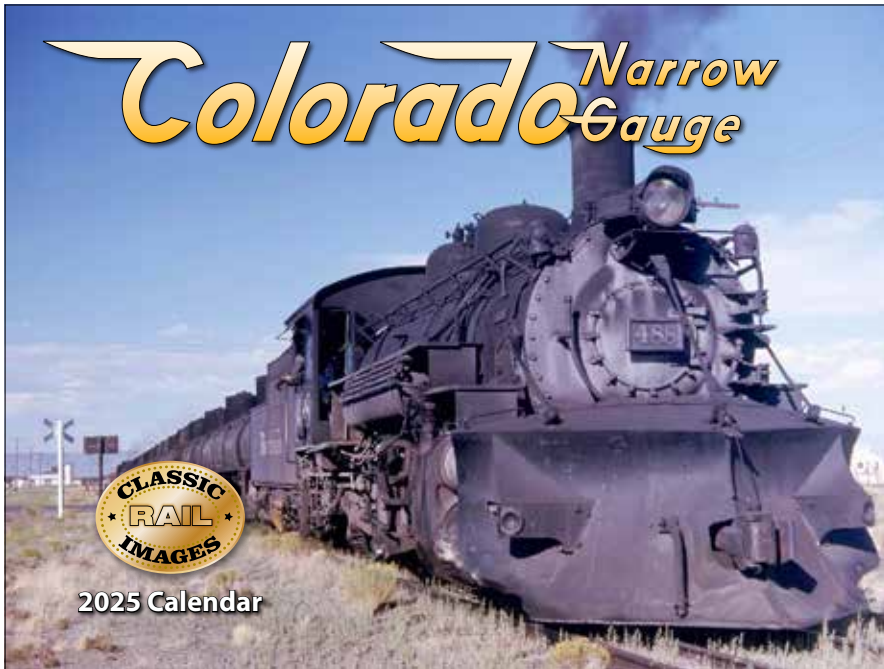


In 1827, the **Baltimore and Ohio Rail Road Co.** became America's first chartered railroad. Innovation followed as the B&O operated the first American-built locomotive, constructed the first station, sold the first passenger tickets, published the first timetable, and became the first line to reach the Ohio River from the east coast. This calendar features the line's classic steam engines and more.

5032, US \$17.95, 13.75 x 20.6 inches, open

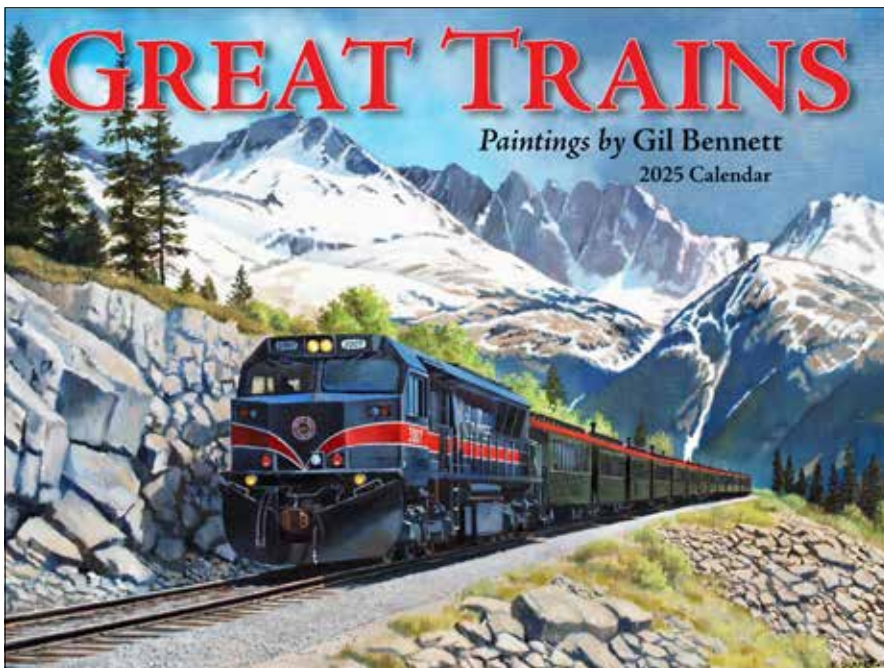
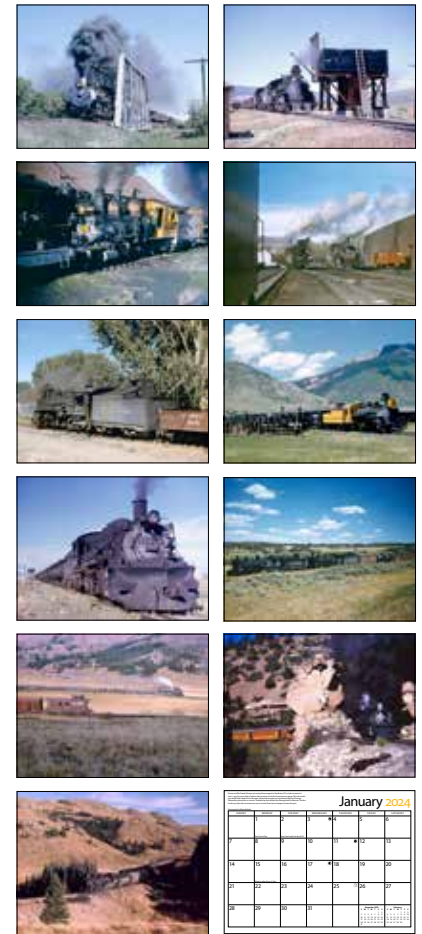


TRAINS



A rail-fan favorite, **Colorado Narrow Gauge** pictures the trains of the Denver & Rio Grande Railroad. Established in 1870, the Rio Grande eventually operated 2,783 miles of track connecting Colorado, New Mexico, and Utah. Serving mountain communities, farms, and mines from the 1800s into the mid-1900s, the Rio Grande ran trains through mountain gorges, and across the highest rail mainline in America to deliver on the D&RG's early motto, "Through the Rockies, not around them."

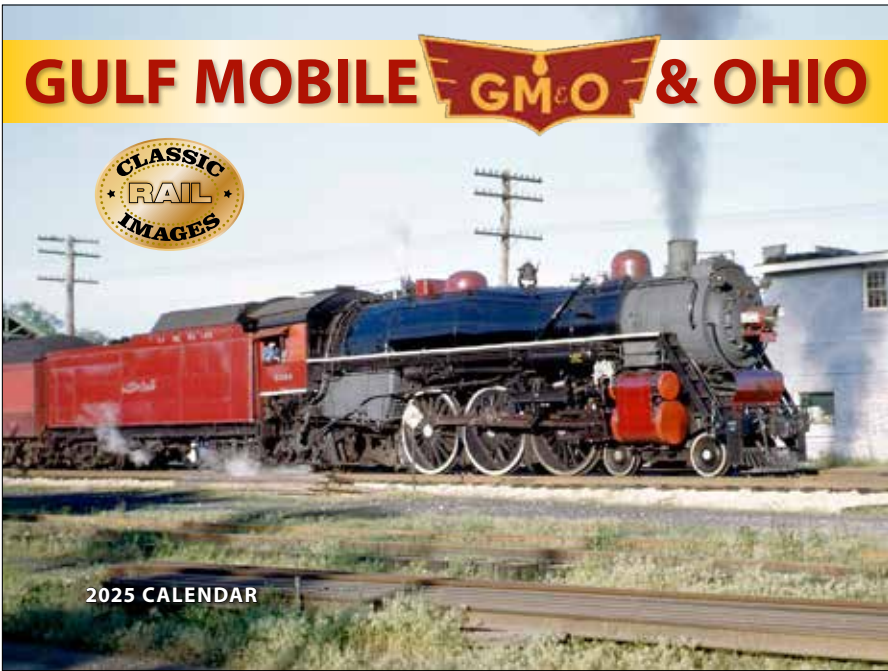
5063, US \$17.95, 13.75 x 20.6 inches, open



The power and romance of the rails is captured through the paintings of Gil Bennett. There are paintings of classic passenger trains of the past, along with locomotives that moved freight and goods across this land. From the diminutive 2-4-4T of the Boston, Revere Beach & Lynn Railroad to Union Pacific's big 4-6-6-4 Challenger, trains from coast to coast are depicted with historical details about the railroads and trains pictured.

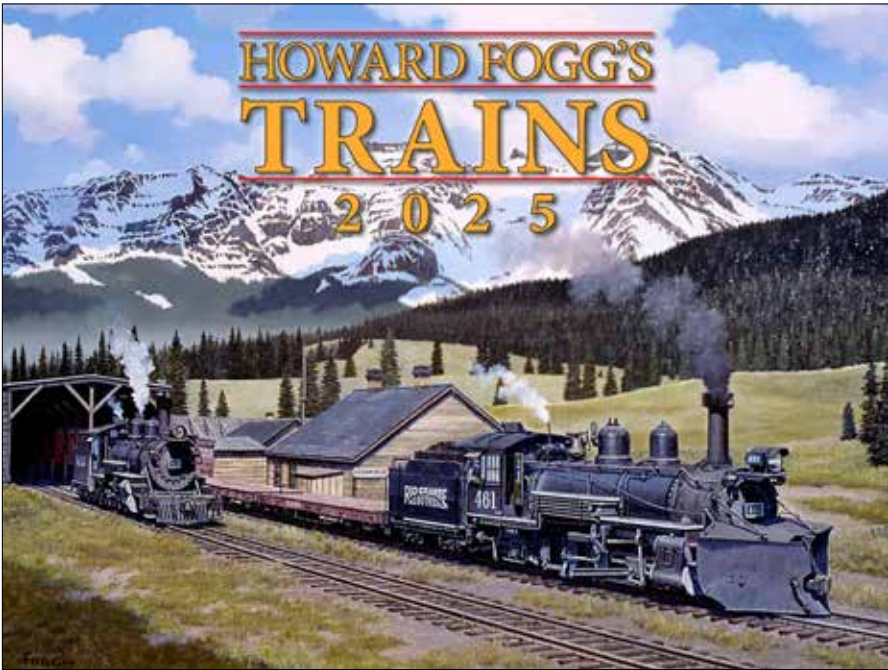
5384, US \$17.95, 13.75 x 20.6 inches, open





In 1940 a tangle of southern lines incorporated to form the **Gulf Mobile and Ohio Railroad**. Success followed and the new road saw three decades of growth. First among large railroads to adopt diesel power, the GMO merged with Illinois Central in 1972. The south to north connection culminated in Canadian National's purchase of IC in 1998. All aboard the Rebel Route, eh!

5070, US \$17.95, 13.75 x 20.6 inches, open



Considered the all-time master of railroad art, Howard Fogg painted the power and majesty of the steel wheel on the steel rail. After rail fans discovered Fogg's artistry, he spent the next 50 years as a freelance artist reinventing the steam age. In **Howard Fogg's Trains**, his paintings live on, commemorating the great age of railroading.

5087, US \$17.95, 13.75 x 20.6 inches, open



TRAINS

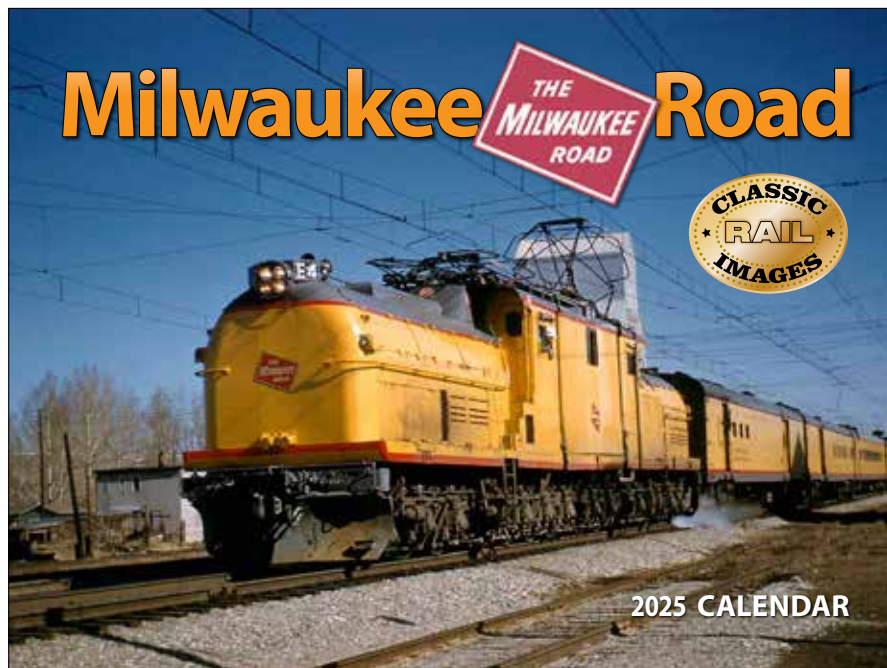


TRAINS



The longest railroad in the world in 1856, **Illinois Central** rails crossed Illinois, and eventually connected Chicago to New Orleans and the Gulf of Mexico. Locomotives featured in the calendar range from a 1920 Lima-built Santa Fe 2-10-2, a 1942 IC-built Mountain 4-8-2, an unusual post-war ALCO RS-2 diesel-electric, and more. Celebrate the “*Mainline of Mid-America.*”

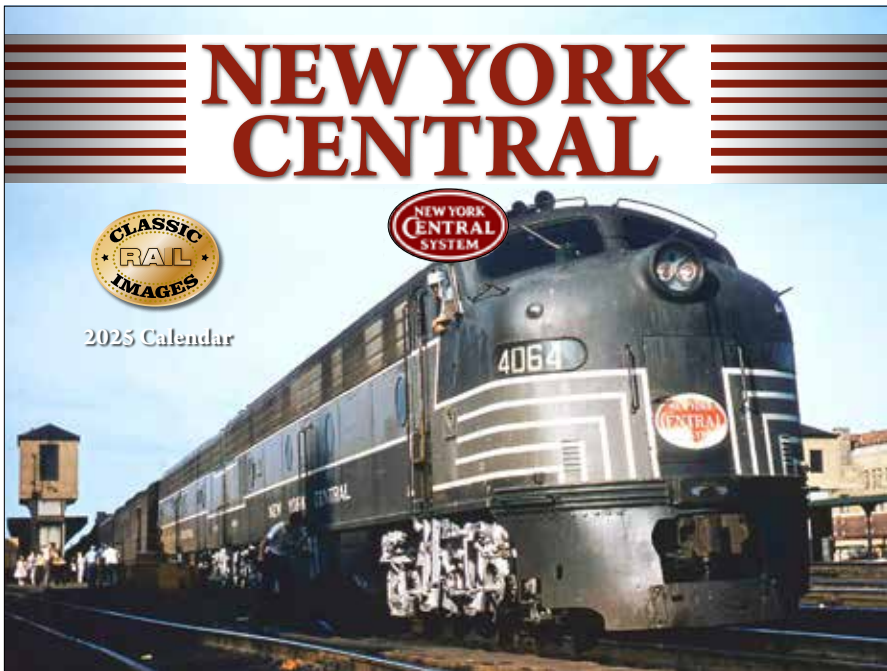
5094, US \$17.95, 13.75 × 20.6 inches, open



Chartered in 1849, the **Milwaukee Road** eventually extended its tracks across the northern tier of the United States to the Pacific Ocean. Noted for its innovative electric motive power and passenger service, the line’s successes were overshadowed by weak management and strong competition. By Spring 1982, all Milwaukee lines from the West Coast to Minnesota had been abandoned, and in 1986 remaining Midwest lines were absorbed into the Soo Line. Today CP Rail operates what remains.

5100, US \$17.95, 13.75 × 20.6 inches, open





In the early years of rail building, a series of lines grew up between New York City, Albany, Schenectady, Utica, Syracuse, Rochester, and Buffalo, linking the Great Lakes and the Midwest to the Hudson River and the world. Brought together in 1853 as the **New York Central Railroad**, the line eventually served half of America's population, moving passengers in the northeast between New York, Chicago, and Detroit, or from Boston to St. Louis.

5186, US \$17.95, 13.75 x 20.6 inches, open



Chartered in Pennsylvania in 1846, construction of the Pennsylvania Railroad began in 1847, and the first all-rail line reached Pittsburgh in 1852. Eventually PRR connected Chicago with Washington, D.C. **Pennsylvania Railroad** recalls the unique engines and trains of "The Standard Railroad of the World."

5230, US \$17.95, 13.75 x 20.6 inches, open



TRAINS

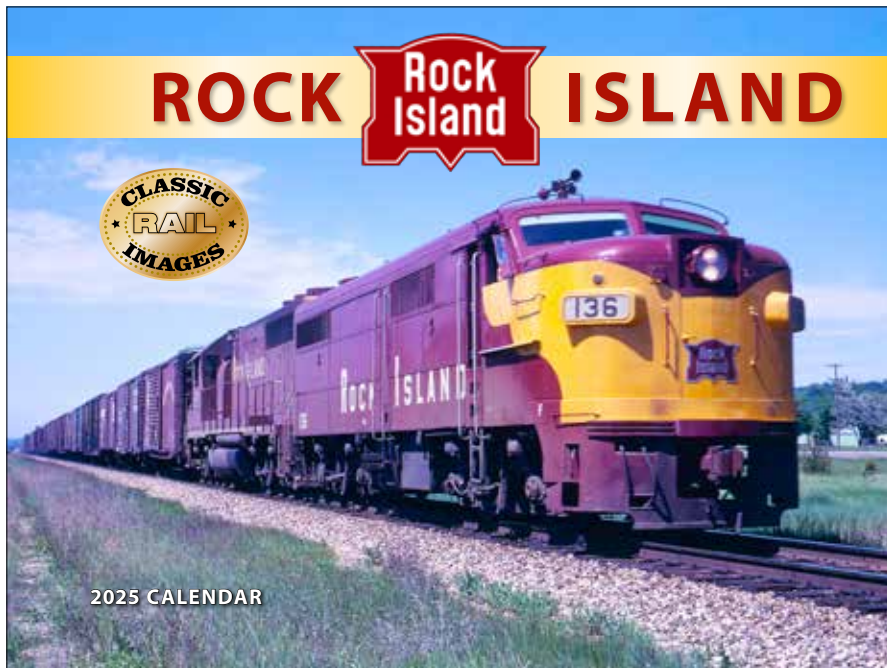
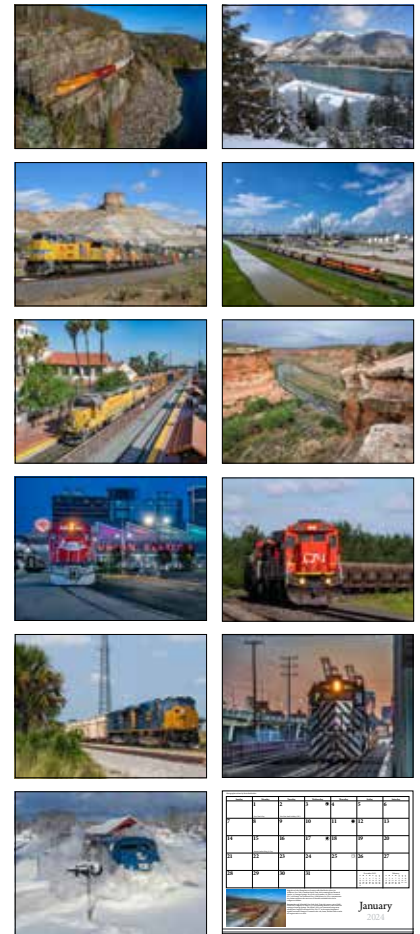


TRAINS



Cross the continent and share the drama of “high iron” on Class I railroads like BNSF, CSX, CN, CP, KCS, and UP. High-stepping terminal giant Pacific Harbor line shows its muscle, while Amtrak blasts through snow in the east and runs through sunshine in the west. **Railroading!** includes descriptive commentary about the featured railroads, rolling stock, and 24 full-color photographs. All aboard!

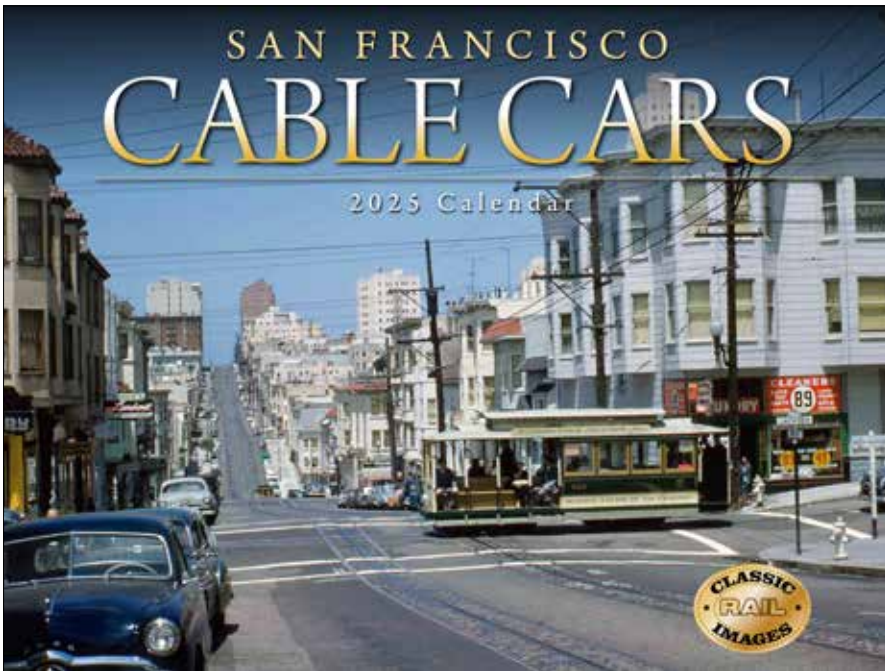
5445, US \$17.95, 13.75 x 20.6 inches, open



Beginning in 1852, Rock Island was built from Chicago north to Minneapolis, west to Denver, and south to Galveston on more than 10,000 miles of track. Locomotives pictured range from a steam-era 2-8-0 Mikado built in 1906, an M-50 4-8-2 from 1920, and early diesels, as well as named trains like the Peoria Rocket and more. As the song says, “Get your ticket at the station for the Rock Island Line.”

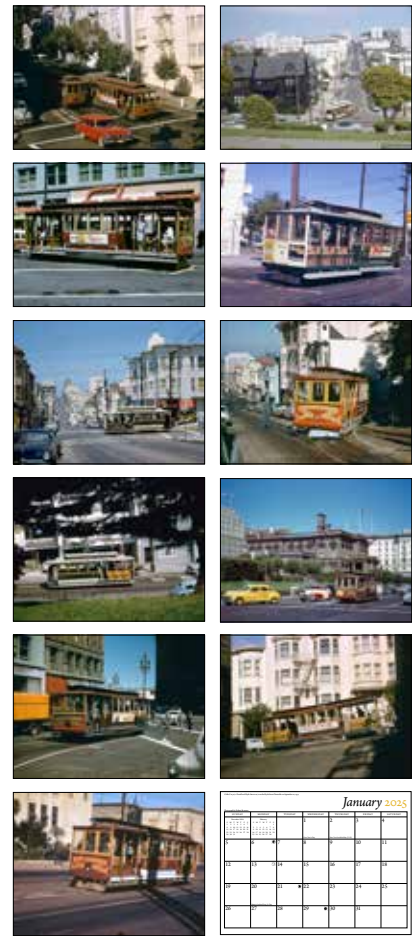
5131, US \$17.95, 13.75 x 20.6 inches, open





San Francisco is a city of hills. Horses powered the first public transportation to traverse them, but the demands were brutal. In 1869 Andrew Hallidie devised a system of steam powered cables to move the first cable cars. Horses were saved and San Francisco became a city of the future. This **Cable Car** calendar pictures the system in operation between the 1940s and the 1960s. Wait for the bell!

5322, US \$17.95, 13.75 x 20.6 inches, open



TRAINS

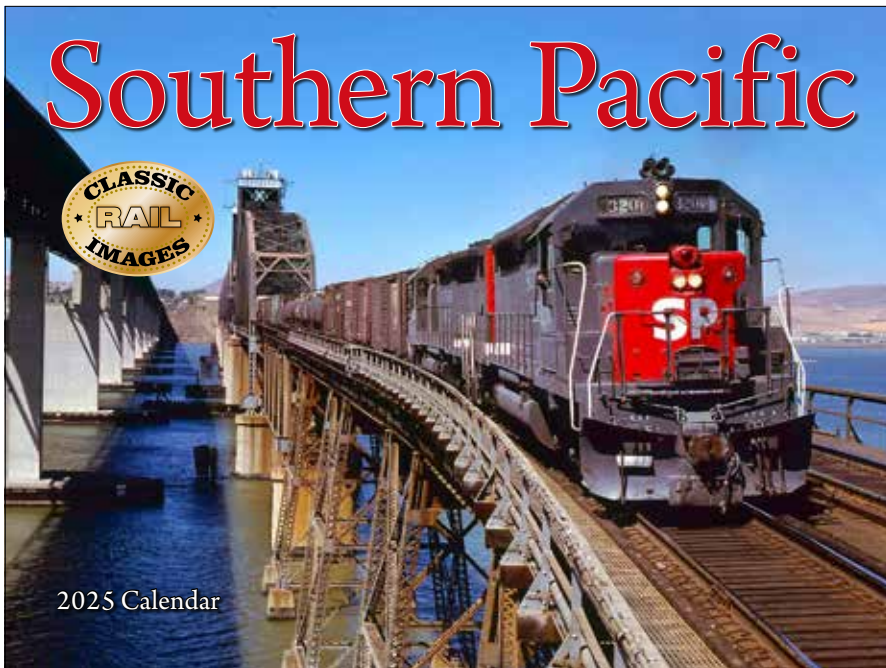


Chartered just before the Civil War, during the next three decades the tracks of the Atchison Topeka and Santa Fe reached from Chicago to Los Angeles. Santa Fe's trains provided the country's most appealing passenger service and for shippers, the most innovative intermodal freight service in America. **Santa Fe** features classic steam and diesel locomotives working on the ATSF.

5148, US \$17.95, 13.75 x 20.6 inches, open

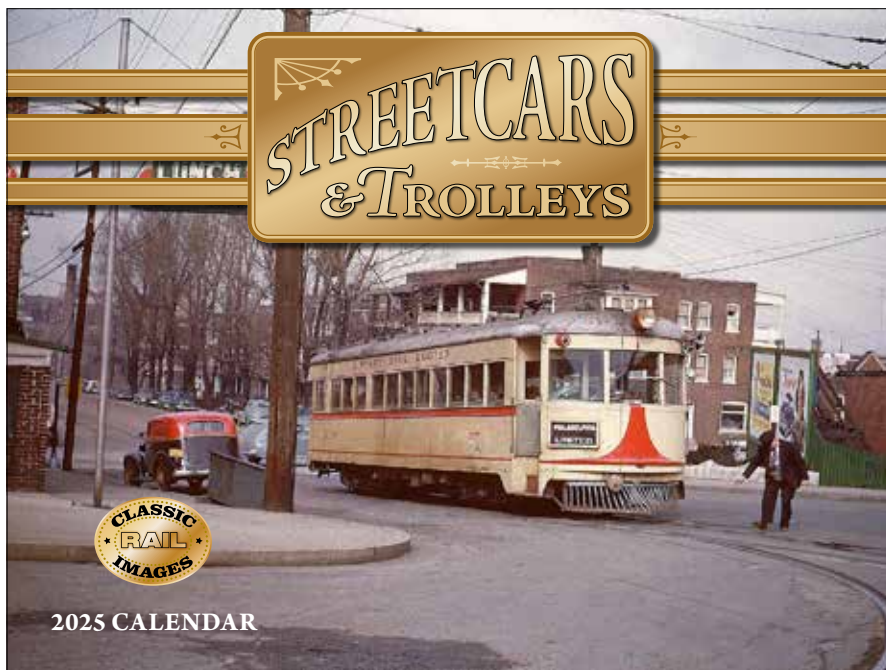


TRAINS



Southern Pacific Railroad began with a simple idea: to connect San Francisco and San Diego, California, by rail. A century later, Southern Pacific had become one of the largest railroads in America, with lines that stretched from coast to coast (connecting to New York via Morgan Line steamships) and from the south to the northwest. In 1959, SP moved more ton-miles of freight than any other U.S. railroad. Engines featured here reach back to the era of SP steam, and forward to the diesels of the 1970s.

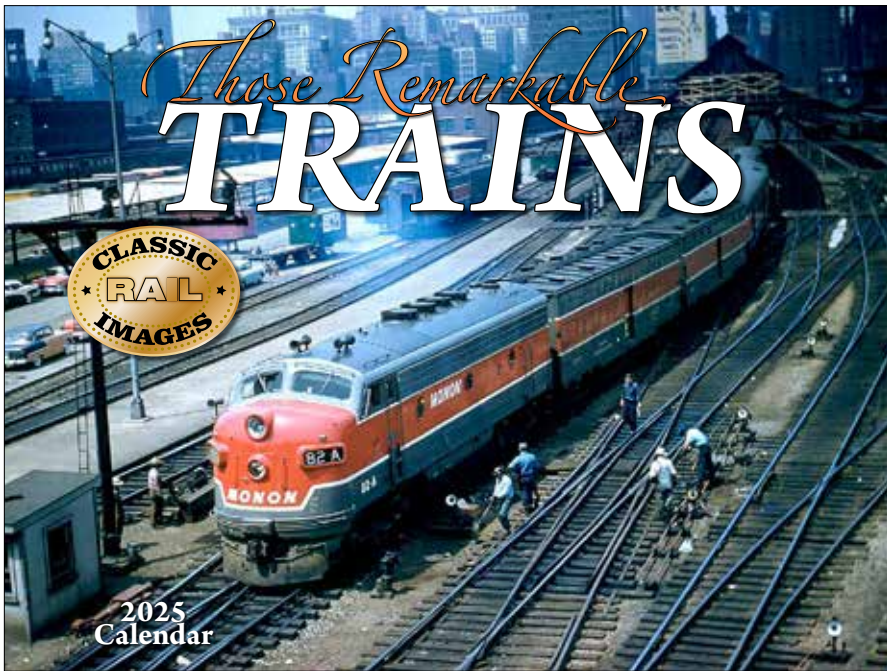
5193, US \$17.95, 13.75 x 20.6 inches, open



Before automobiles and buses, there were streetcars or trolleys in virtually every American city. **Streetcars & Trolleys** recalls that era through historic photographs from around the United States. Cars from city systems featured include: Omaha, Chicago, Waukesha, Denver, Minneapolis, and more.

5155, US \$17.95, 13.75 x 20.6 inches, open





This remarkable collection of classic steam and early diesel locomotives offers thundering power and great style through more than 50 years of railroading. Locomotives include: a C&IM Baldwin 2-10-2 from 1926, a Lehigh Valley Alco PA-1, an Alco Mikado (2-8-2) from 1924, a unique Baldwin coal-fired, steam turbine electric from 1954, and more. Don't miss the call!

5162, US \$17.95, 13.75 x 20.6 inches, open



TRAINS



The **Union Pacific** pioneered transcontinental rail service. Running freight through half of America meant long consists hauled by some of the largest locomotives ever built. From the steam era, a Union Pacific Type 4-12-2 from 1930, a Santa Fe Type TTT 2-10-2 from 1923, Big Boy 4018 (4-8-8-4) from 1942, on to 8,500 h.p. Super Tubine #14, and more. Roll on!

5179, US \$17.95, 13.75 x 20.6 inches, open



TRAINS

Tidemark

207 Oakwood Ave. • West Hartford, CT • 06119

Wholesale Discounts and Free Freight Available. Call for Information.

860-310-3370 x108 | e-mail: Scott@tide-mark.com